

do the
excitement
machine

**WRX
2018**



SUBARU



do

do™

do

Do the excitement machine.
Find out more at subaru.com.au/wrx-and-wrx-sti

do the excitement machine

Welcome to Australia's iconic performance vehicle. The thrill of a turbocharged Boxer engine combined with the legendary grip of Symmetrical All-Wheel Drive, in a distinctively muscular package. The Subaru WRX has grunt, 197kW power and 350Nm torque to be exact.

Every millimetre of the WRX is built for excitement. A thumping stereo, super large touchscreen, sports body kit, high tech driver assist features and the option of one of the best Lineartronic™ CVT automatic transmissions around – this car compromises nothing.

Book in for a test drive today and leave boring behind.



leave boring behind

No one does performance like we do, and the Subaru WRX is built for pure driving enjoyment. With a stylish and sophisticated interior surrounded by muscle car power and looks, this car oozes attitude.

If the classic mesh grille, 18" alloys, rear spoiler, red brake calipers¹ and sports body kit don't command attention, the rumble of the Boxer engine will – delivering 197kW of power and 350Nm@2400-5200rpm of torque.

Subaru WRX features

Performance

- + 2.0-litre Direct Injection turbocharged horizontally-opposed Boxer engine
- + 6-speed manual transmission or Lineartronic™ CVT transmission
- + Maximum power output: 197kW@5600rpm
- + Maximum torque: 350Nm@2400-5200rpm

Interior

- + Air-conditioning – dual zone climate control
- + Sports bucket seats – driver and front passenger with red stitching
- + Cloth seat trim – black
- + Leather² steering wheel and gear shift
- + Manual seat height lifter – driver
- + 60/40 split folding rear seats

Exterior

- + 18" alloy wheels
- + Rear spoiler
- + WRX sports mesh grille
- + Headlights – self-levelling LED headlights with auto off (dusk-sensing)
- + Fog lights – front (LED) and rear
- + Door mirrors with indicators – heated and power-folding
- + Side sill skirts
- + Rain-sensing front wipers

Entertainment / technology

- + Multi-Function Display unit (MFD)
- + Integrated infotainment system with 6.2" touchscreen
- + Bluetooth^{®3} wireless technology

- + Rear view reverse camera
- + Auxiliary jack
- + USB connection
- + Voice command recognition
- + Electronic parking brake (CVT)
- + EyeSight[®] Driver Assist system (CVT) featuring:
 - + Adaptive Cruise Control
 - + Brake Light Recognition
 - + Lane Departure Warning
 - + Lane Keep Assist
 - + Lane Sway Warning
 - + Lead Vehicle Start Alert
 - + Pre-Collision Brake Assist
 - + Pre-Collision Braking System
 - + Pre-Collision Steering Assist
 - + Pre-Collision Throttle Management

1. MT – front and rear, CVT – front only. 2. Some parts of the seating or trim are not full natural leather. 3. Bluetooth[®] is a registered trademark of Bluetooth SIG Inc. System operation ability is subject to Bluetooth[®] wireless technology specification of individual device.

arrival time? who cares

Just when you thought your ride couldn't get any better, the Subaru WRX Premium delivers an electric sunroof, 8-way power drivers seat, 7" touchscreen and eight thumping harman kardon®¹ speakers. The WRX Premium also boasts Subaru's suite of Vision Assist safety technologies, including Blind Spot Monitor, High Beam Assist, Lane Change Assist and more.

Subaru WRX Premium features

Performance

- + 2.0-litre Direct Injection turbocharged horizontally-opposed Boxer engine
- + 6-speed manual transmission or Lineartronic™ CVT transmission
- + Maximum power output: 197kW@5600rpm
- + Maximum torque: 350Nm@2400-5200rpm

Interior

- + Air-conditioning – dual zone climate control
- + Sports bucket seats – driver and front passenger with red stitching
- + Leather² seat trim – black
- + Leather² steering wheel and gear shift
- + 8-way power seat with dual memory – driver
- + 60/40 split folding rear seats
- + Smart key with push-start ignition
- + Auto-dimming rear view mirror
- + Electric lumbar support – driver

Exterior

- + 18" alloy wheels
- + Rear spoiler
- + WRX sports mesh grille
- + Headlights – self-levelling LED headlights with auto off (dusk-sensing)
- + Fog lights – front (LED) and rear
- + Electric sunroof
- + Door mirrors with indicators – heated and power-folding
- + Rain-sensing front wipers with de-icer
- + Side sill skirts

Entertainment / technology

- + Multi-Function Display unit (MFD)
- + Integrated infotainment system with 7" touchscreen
- + Satellite navigation
- + 8 harman kardon®¹ speakers, subwoofer and amplifier
- + Bluetooth®³ wireless technology
- + Rear view reverse camera

- + Auxiliary jack
- + USB connections (x2)
- + Electronic parking brake (CVT)
- + Vision Assist featuring:
 - + Blind Spot Monitor (BSM)
 - + Front View Monitor (FVM)
 - + High Beam Assist (HBA)
 - + Lane Change Assist (LCA)
 - + Rear Cross Traffic Alert (RCTA)
 - + Side View Monitor (SVM)
- + EyeSight® Driver Assist system (CVT) featuring:
 - + Adaptive Cruise Control
 - + Brake Light Recognition
 - + Lane Departure Warning
 - + Lane Keep Assist
 - + Lane Sway Warning
 - + Lead Vehicle Start Alert
 - + Pre-Collision Brake Assist
 - + Pre-Collision Braking System
 - + Pre-Collision Steering Assist
 - + Pre-Collision Throttle Management

Arrival time? Who cares.
Explore the range at subaru.com.au/wrx-and-wrx-sti

1. harman kardon® is a registered trademark of HARMAN International Industries, Incorporated. 2. Some parts of the seating or trim are not full natural leather. 3. Bluetooth® is a registered trademark of Bluetooth SIG Inc. System operation ability is subject to Bluetooth® wireless technology specification of individual device.



Subaru WRX Premium (CVT)

why WRX?

Symmetrical force of power

Our All-Wheel Drive philosophy

Greater balance and control. That's the confidence you get from our unique Symmetrical All-Wheel Drive System, which delivers the drive distribution to all four wheels, all the time. Every Subaru WRX has an innate sense of balance from the ground up, thanks to a near perfect symmetrical layout.

Boxing clever

Our famous Subaru Boxer engine

While most engines stand vertically, ours lay flat. The famous Subaru Boxer engine delivers handling like no other engine can. Sitting horizontally in the engine bay, it moves like a boxer's fists with a punch and counterpunch action. Lightweight, low and flat, it makes for perfect balance and a much lower centre of gravity. It creates less noise and vibration too. All of this means better on-road handling for you. More stability. More performance. More fun. And a more confident drive.

DataDotDNA®

Every Subaru is fitted with advanced engine immobilisers and the DataDotDNA®¹ Theft Deterrent System. Microscopic dots are laser-etched with each vehicle's unique Vehicle Identification Number – making it a less attractive target for thieves.

Three Year Rebate on Theft Insurance Excess

DataDot Technology (Australia) Pty Ltd will pay your theft insurance excess² (up to a maximum of \$800 including GST) should your new Subaru be stolen and not recovered within 45 days, despite the presence of DataDotDNA®¹ and warning labels.

Finest safety

5 star ANCAP safety across the range

With spirit, quality and imagination comes some serious safety innovation. We want every Subaru to be amongst the safest cars on the road. Engineered full of cutting-edge technologies and the most intelligent design features. It's not a Subaru unless it carries the maximum 5 star ANCAP³ safety rating.

Eyes in the back of your head

Rear view reverse camera

Manoeuvring back into a tight side street? Family driveway littered with toys? Reverse with confidence, thanks to our rear view reverse camera technology. The rear view reverse camera is like having eyes in the back of your head. This greatly improves your visibility and reduces the risk of bumps and scrapes. A rear view reverse camera is standard on every Subaru WRX and WRX Premium.

Yet another world first

Lineartronic™ CVT

Pushing innovation beyond the bounds, we introduced an automatic transmission called Lineartronic™ CVT (Continuously Variable Transmission). And it's the reason our automatic models drive so smooth. It's the world's first longitudinally mounted system for AWD vehicles. Unlike a conventional automatic transmission – which uses fixed gear ratios – our Lineartronic™ CVT provides infinite variability between the highest and lowest available gears. So you now experience a smooth gear change, into any optimum gear for that moment. Lineartronic™ CVT is available on Subaru WRX and WRX Premium.

Intelligently driven

Subaru Intelligent Drive

Heading to the shops? Taking on the Great Ocean Road? Each situation deserves a distinctive driving mode, so we crafted Subaru Intelligent Drive (SI-Drive) technology standard on all Subaru WRX Lineartronic™ CVT variants to do just that. Switch from smart, to sporty to even sportier. Intelligent (I) mode – perfect for everyday driving, Sport (S) mode – for enhanced acceleration and all-round sporty performance and Sport Sharp (S#) mode – for a truly thrilling drive.

We're looking out for you

EyeSight® Driver Assist

We were the first car company to exclusively use stereo camera technology to detect objects in our vehicles path. A sign of our future-thinking and our commitment to quality, technology and safety, EyeSight® Driver Assist is like your second pair of eyes, spotting potentially dangerous situations. If EyeSight® detects anything that might be of danger, it warns you audibly, urging you to take action and brake. EyeSight® is available on Subaru WRX Lineartronic™ CVT variants.

Clever thinking

Vision Assist

Imagine if your wing mirrors could alert you when there's something in your blind spot. Or if your car could guide you almost perfectly into a parking spot. We made all this happen and more with Subaru's Vision Assist.

Our suite of proactive safety technologies including Blind Spot Monitor, Rear Cross Traffic Alert, Lane Change Assist, High Beam Assist, Front View Monitor and Side View Monitor are always at work to help you feel safer on the road. Subaru's Vision Assist technologies are standard on the Subaru WRX Premium.

1. DataDotDNA® is a theft deterrent not a theft prevention mechanism. 2. Vehicles must be registered, comprehensively insured and less than 3 years old. DTA must receive a claim within 45 days of the theft. Terms and conditions apply. 3. The Australasian New Car Assessment Program (ANCAP) gives consumers consistent information on the level of occupant protection provided by vehicles in serious front and side crashes.

attitude outside, luxury inside

If you're wielding 197kW of muscle car power inside iconic sports styling, you're going to want luxury comfort. The leather¹ steering wheel and gear shift gives you superior feel and control while sports bucket seats hug your body – all trimmed with red stitching. The Subaru WRX Premium also offers heated front seats and black leather¹ trim.

Set the soundtrack and make handsfree calls through the large intuitive touchscreen. A rear view reverse camera covers your rear just as satellite navigation on the WRX Premium keeps you heading in the right direction. Whatever you do, it'll never be boring.



Infotainment system
Subaru WRX



Push-start ignition
All WRX variants



harman kardon®2 speakers
Subaru WRX Premium



Steering wheel controls
Lineartronic™ CVT variants

1. Some parts of the seating or trim are not full natural leather.
2. harman kardon® is a registered trademark of HARMAN International Industries, Incorporated.



**Subaru WRX
Premium (CVT)**

be inspired

Interior

On the inside Subaru WRX features black cloth. Sumptuous black leather¹ is standard on WRX Premium.



Leather
Black



Cloth
Black

Exterior

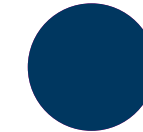
The colour you choose for your Subaru makes a bold statement about who you are. So we've made sure you've got lots of ways to express yourself – with a wide range of colours to make your Subaru more... you.



Crystal White
Pearl



WR Blue
Pearl



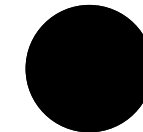
Lapis Blue
Pearl



Pure Red



Dark Grey
Metallic



Crystal Black
Silica



Ice Silver
Metallic

1. Some parts of the seating or trim are not full natural leather.

Note: Paint colours are representative only and subject to variation due to the printing process.

WRX specifications¹

MODEL	WRX		WRX Premium	
	Sedan		Sedan	
Transmission				
6-speed manual transmission	•		•	
Sports Lineartronic™ CVT	•		•	
Engine				
Engine type	Direct Injection turbocharged horizontally-opposed Boxer 4-cylinder, petrol engine			
Valve mechanism	DOHC with Dual AVCS			
Bore x stroke	mm	86.0 x 86.0		
Capacity	cc	1998		
Compression ratio	10.6:1			
Fuel tank capacity	litres	60		
Fuel system	Direct injection			
Fuel requirement (min)	RON	95		
Performance ²				
Maximum power output (DIN)	kW/rpm	197kW@5600rpm		
Maximum torque (DIN)	Nm/rpm	350Nm@2400-5200rpm		
Acceleration ³ 0 – 100 km/h	seconds	6.0 (MT) / 6.3 (CVT)		
Electronic Throttle Control system (ETC)	Drive-by-wire			
Fuel consumption (ADR 81/02)				
For comparison purposes only. Real world results may vary ⁴ :				
	combined	l/100 km	9.2 (MT) / 8.6 (CVT)	
	urban	l/100 km	12.7 (MT) / 11.8 (CVT)	
	extra urban	l/100 km	7.2 (MT) / 6.8 (CVT)	
CO ₂ emissions (ADR 81/02)	combined	(g/km)	213 (MT) / 199 (CVT)	
Symmetrical All-Wheel Drive				
Type	Manual	Centre Differential with a Viscous Limited Slip Differential		
	Auto	Variable Torque Distribution		
Transmission				
Gear ratio	1st	3.454 (MT) / 3.505 (S#: 3.505) (CVT)		
	2nd	1.947 (MT) / 2.238 (S#: 2.405) (CVT)		
	3rd	1.366 (MT) / 1.641 (S# 1.855) (CVT)		
	4th	1.029 (MT) / 1.194 (S#: 1.544) (CVT)		
	5th	0.825 (MT) / 0.880 (S#: 1.258) (CVT)		
	6th	0.666 (MT) / 0.611 (S#: 1.032) (CVT)		

1. Subaru Australia reserves the right to change mechanical specification and equipment levels without notice. 2. All performance data measured using 95RON as required by Australian Design Rule 81/02. Vehicles tested in accordance with ADR 81/02. 3. Acceleration test performed under controlled conditions. 4. Fuel consumption figures quoted are measured in accordance with Australian Design Rule 81/02 and are for comparison purposes only. Real world results may vary based on individual driving circumstances e.g. traffic conditions, driving style, vehicle conditions, fuel quality, climatic conditions etc.

WRX specifications¹

MODEL		WRX	WRX Premium
	7th	(S#: 0.856) (CVT)	
	8th	(S#: 0.716) (CVT)	
Gear ratio – reverse		3.636 (MT) / 2.345 (CVT)	
Final reduction gear ratio		4.444 (MT) / 3.900 (CVT)	
Steering			
Steering		Electric power assistance rack and pinion	
Minimum turning circle	m	11.0	
Suspension			
Type	Front	MacPherson struts inverted, lower L-arms, coil springs, stabiliser bar	
	Rear	Double wishbone, coil springs, stabiliser bar	
Brakes			
Type	Front	Ventilated disc brakes	
	Rear	Disc brakes (MT) / Ventilated disc brakes (CVT)	
Brake booster type		Tandem	
ABS		4-channel, 4-sensor ABS with Electronic Brakeforce Distribution and VDC	
Wheels and Tyres			
Tyre model		Dunlop SP Sport Maxx RT	
Tyres (width, profile, size, load index and speed rating)		245/40 R18 97W	
Rim size		18x8.5J	
Wheels		18"	
Spare wheel		Spacesaver wheel	
Measurement			
Overall length	mm	4595	
Overall width	mm	1795	
Overall height	mm	1475	
Wheel base	mm	2650	
Front track	mm	1530	
Rear track	mm	1540	
Minimum ground clearance ²	mm	135	
Cargo volume	litres	460	
Kerb weight ³	kg	1476 (MT) / 1534 (CVT)	1514 (MT) / 1572 (CVT)
Tare mass ³	kg	1436 (MT) / 1494 (CVT)	1474 (MT) / 1532 (CVT)
Seating capacity		5	

1. Subaru Australia reserves the right to change mechanical specification and equipment levels without notice. 2. Ground clearance at kerb weight. 3. Vehicle kerb weight and tare mass varies according to the types of optional equipment included.

WRX features¹

MODEL	WRX	WRX Premium
Safety Rating		
5 star ANCAP ² safety rating (maximum 5)	•	•
Collision Avoidance		
Symmetrical All-Wheel Drive (SAWD)	•	•
Vehicle Dynamics Control system (VDC) featuring:	•	•
Electronic Stability Control (ESC)	•	•
Anti-lock Braking System (ABS)	•	•
Electronic Brakeforce Distribution (EBD)	•	•
Brake Assist	•	•
Traction Control System (TCS)	•	•
Active Torque Vectoring system	•	•
4-wheel disc brakes	•	•
Auto Vehicle Hold (AVH)	CVT	CVT
Electronic parking brake	CVT	CVT
Rear view reverse camera	•	•
Vision Assist featuring:		•
Blind Spot Monitor (BSM)		•
EyeSight® Assist Monitor		CVT
Front View Monitor (FVM)		•
High Beam Assist (HBA)		•
Lane Change Assist (LCA)		•
Rear Cross Traffic Alert (RCTA)		•
Side View Monitor (SVM)		•
Collision Protection		
SRS ³ airbags – dual front, dual front side and curtain	•	•
SRS ³ airbags – knee airbag (driver only)	•	•
Front seat belts with pretensioners and load limiters	•	•
3 point A/ELR rear seat belts	•	•
Height adjustable seat belt anchors – driver and front passenger	•	•
Seat belt warning lights – all seats	•	•
Rear seat headrests for 3 seating positions	•	•
Height and angle adjustable front seat headrests	•	•
Height adjustable rear seat headrests	•	•

1. Subaru Australia reserves the right to change mechanical specification and equipment levels without notice. 2. The Australasian New Car Assessment Program (ANCAP) gives consumers consistent information on the level of occupant protection provided by vehicles in serious front and side crashes. 3. SRS: Supplemental Restraint System. Effective when used in conjunction with seat belts.

WRX features¹

MODEL	WRX	WRX Premium
Child Safety		
Child seat anchor points (x3)	•	•
ISOFIX anchor points (x2)	•	•
Rear door child locks	•	•
Intelligent Driving Dynamics		
Electronic Throttle Control system (ETC)	•	•
Cruise Control	MT	MT
Subaru Intelligent Drive (SI-Drive):	CVT	CVT
Intelligent (I) mode	CVT	CVT
Sport (S) mode	CVT	CVT
Sport Sharp (S#) mode	CVT	CVT
EyeSight® Driver Assist system featuring:		
Adaptive Cruise Control	CVT	CVT
Brake Light Recognition	CVT	CVT
Lane Departure Warning	CVT	CVT
Lane Keep Assist	CVT	CVT
Lane Sway Warning	CVT	CVT
Lead Vehicle Start Alert	CVT	CVT
Pre-Collision Brake Assist	CVT	CVT
Pre-Collision Braking System	CVT	CVT
Pre-Collision Steering Assist	CVT	CVT
Pre-Collision Throttle Management	CVT	CVT
Chassis and Mechanism		
Front and rear stabiliser	•	•
Rear Limited Slip Differential (LSD) (manual)	Torsen	Torsen
Exterior		
Body coloured mirrors and door handles	•	•
Body coloured rear garnish	•	•
Bonnet scoop	•	•
Bonnet with gas struts	•	•
Red brake calipers	Front and Rear (MT) / Front (CVT)	Front and Rear (MT) / Front (CVT)
Detachable module type windscreen wipers	•	•
Door mirrors with indicators – heated and power-folding	•	•
Dual twin tail pipes with covers	•	•
Electric sunroof		•

1. Subaru Australia reserves the right to change mechanical specification and equipment levels without notice.

WRX features¹

MODEL	WRX	WRX Premium
Engine cover	•	•
Front wipers with de-icer		•
Fuel cap – tethered	•	•
Rear diffuser	•	•
Rear spoiler	•	•
Roof carrier brackets	•	•
Shark fin antenna	•	•
Side garnish with WRX logo	•	•
Side sill skirts	•	•
Spacesaver spare wheel	•	•
Sports mesh grille	•	•
Tail pipe covers	•	•
18" alloy wheels	•	•
Lighting – Exterior		
Daytime running lights – LED	•	•
Front fog lights – LED	•	•
Headlights – dusk-sensing	•	•
Headlights – self-levelling LED headlights with auto off	•	•
Rear fog light	•	•
Rear LED combination lights	•	•
Rear LED stoplight	•	•
Steering Responsive Headlights (SRH)	•	•
Welcome lighting	•	•
Lighting – Interior		
Cabin and cargo area lights	•	•
Map lights (x2)	•	•
Air-conditioning		
Air-conditioning – dual zone climate control	•	•
Anti-dust filter	•	•
Front and side demisters	•	•
Floor heater ducts for rear passengers	•	•
Rear windscreen demister – electric	•	•
Security		
DataDotDNA ^{®2} security system	•	•
Immobiliser security system	•	•

1. Subaru Australia reserves the right to change mechanical specification and equipment levels without notice. 2. DataDotDNA[®] is a theft deterrent not a theft prevention mechanism.

WRX features¹

MODEL	WRX	WRX Premium
Instrumentation and Controls		
Adjustable steering wheel – height and telescopic	•	•
Electroluminescent gauges with colour MID	•	•
Manual mode	CVT	CVT
Instrument cluster	•	•
One touch lane change indicator	•	•
Paddle gear shifters	CVT	CVT
Sports pedals	•	•
Steering wheel controls:	•	•
Audio	•	•
Bluetooth ^{®2}	•	•
Cruise	MT	MT
EyeSight [®]	CVT	CVT
MID	•	•
SI-Drive	CVT	CVT
Multi-Function Displays		
Multi-Information Display unit (MID) featuring:	•	•
3.5" LCD screen	•	•
Journey information	•	•
Eco-gauge display	•	•
EyeSight [®] display	CVT	CVT
SI-Drive display	CVT	CVT
Warning display	•	•
Digital speedometer	•	•
Multi-Function Display unit (MFD) featuring:	•	•
5.9" LCD screen	•	•
Outside temperature and clock display	•	•
Journey and fuel economy information	•	•
Air-conditioning and seat belt display	•	•
Preventative Safety display	•	•
Side View Monitor display		•
Front View Monitor display		•
Turbo boost pressure display	•	•
MFD visor with red stitching	•	•
Twin trip meter (switchable)	•	•

1. Subaru Australia reserves the right to change mechanical specification and equipment levels without notice. 2. Bluetooth[®] is a registered trademark of Bluetooth SIG Inc. System operation ability is subject to the Bluetooth[®] wireless technology specification of individual's device.

WRX features¹

MODEL	WRX	WRX Premium
Storage		
Centre console box with sliding armrest	CVT	CVT
Cupholders with sliding lid – centre console	CVT	CVT
Cupholders – rear	•	•
Door pockets with integrated bottle holder – front and rear	•	•
Front centre tray with WRX logo	MT	MT
Seat back pocket – driver and front passenger		•
Seat back pocket – front passenger	•	
Convenience		
12V/120W power jacks (x2)	•	•
Auto-dimming rear view mirror		•
Boot unlock on remote central locking keys	•	•
Interior fuel lid lock release	•	•
Intermittent variable speed front windscreen wipers	•	•
Power steering and mirrors	•	•
Power windows – all with auto function	•	•
Rain-sensing front windscreen wipers	•	•
Remote central locking – selective unlock	•	•
Remote central locking keys (x2)	•	•
Smart key and push-start ignition	•	•
Sunvisors with illuminated vanity mirrors – driver and front passenger	•	•
Interior Trims		
Carpet trim – black	•	•
Leather ² steering wheel and gear shift	•	•
Seat trim – black cloth	•	
Seat trim – black leather ²		•
Sports bucket seats with red stitching – driver and front passenger	•	•
Seating Extras		
60/40 split folding rear seats	•	•
8-way power seat with dual memory – driver		•
Electric lumbar support – driver		•
Heated seats - driver and front passenger		•
Manual seat height lifter – driver	•	

1. Subaru Australia reserves the right to change mechanical specification and equipment levels without notice. 2. Some parts of the seating or trim are not full natural leather.

WRX features¹

MODEL	WRX	WRX Premium
Entertainment		
Integrated infotainment system featuring:	•	•
Satellite navigation		•
AM/FM radio	•	•
Single CD player	•	•
6 speakers	•	
8 harman kardon ^{®2} speakers, subwoofer and amplifier		•
6.2" touchscreen	•	
7" touchscreen		•
Siri ^{®3} compatibility		•
Bluetooth ^{®4} wireless technology with:	•	•
Handsfree mobile communication	•	•
Audio streaming ⁵	•	•
Voice command recognition	•	•
Auxiliary jack – front centre console	•	•
USB connections – front centre console	x1	x2
Warranty		
3 Year/Unlimited Km Warranty	•	•
3 Year/75,000 Km Capped Price Servicing Program ⁶	•	•
12 Month Roadside Assistance Program ⁷	•	•

1. Subaru Australia reserves the right to change mechanical specification and equipment levels without notice. 2. harman kardon is a registered trademark of HARMAN International Industries, Incorporated. 3. Requires compatible Siri[®] enabled Apple device to be paired with the infotainment system. 4. Bluetooth[®] is a registered trademark of Bluetooth SIG Inc. System operation ability is subject to the Bluetooth[®] wireless technology specification of individual's device. 5. There may be restrictions on features available for certain models that are not fully compliant with AVCRP. 6. Every brand new 2018 Subaru WRX comes with Subaru's 3 Year/75,000 Kilometre Capped Price Servicing Program. Available at participating Subaru Retailers only and does not apply to rental and some other classes of vehicles. For full Capped Price Servicing Terms and Conditions visit [subaru.com.au/service/pricing/capped-price-servicing](https://www.subaru.com.au/service/pricing/capped-price-servicing). 7. Terms and conditions apply. For a full list of benefits, visit <https://www.subaru.com.au/owner-experience/benefits/program/roadside>.

the excitement machine, made even more exciting

Your Subaru WRX handles as much excitement as you can throw at it. No matter the adventure, we've got some good kit to go with it. Style it up, spec it up and experience more with sports inspired Genuine Subaru Accessories designed to Subaru's exacting standards.

- | | |
|------------------------------------|--|
| + Protection | Protect your WRX with a range of products including carpet mats, a cargo tray, cargo cover and rear bumper protector. |
| + Cargo | To extend your WRX's carrying capacity we offer a broad range of Subaru and Thule sport and cargo carrier accessories. |
| + Security, Convenience and Safety | Keep your new wheels secure with a security alarm system. New parents will love our 6-point-harness baby seat which integrates with Subaru WRX's ISOFIX anchor points. |
| + STI Performance Parts | Tweak the performance of your new Subaru WRX for that extra edge. Emphasise the beast with performance parts for optimum handling and control. Or spiff it up with aerodynamic spoilers. |

Genuine Subaru Accessories are available from your Subaru Retailer, so be sure to ask about the range when buying your new Subaru WRX.

 To view our complete range of accessories and pricing online visit subaru.com.au/wrx/accessories



packs that will inspire you

From coastal adventures to nights out in the city, this quality Genuine Subaru Accessory Pack will add a stylish flare like no other and give you the versatility you desire to stand out with your Subaru WRX.

Both stylish and functional, each Styling Pack¹ accessory has been custom made for a tailored fit to complement your Subaru WRX and keep it looking good for years to come.

Plus all Genuine Subaru Accessories are protected by our manufacturer's warranty².

Styling Pack¹ includes:

a STI Front Under Spoiler

Do corners and open road driving with more confidence, stability and handling, while adding stylish appeal.

c STI Rear Side Under Spoiler

Have some fun and finish first with sporty design detail for every last inch of your WRX.

b STI Side Under Spoiler

Enhance the stylish silhouette of your WRX with this sleek side spoiler designed to complement the vehicle's bodyline.

d STI Rear Under Spoiler

Complete the picture with this rear under spoiler which improves overall vehicle aerodynamics and adds an aggressive, dynamic look.

1. Adding Styling Pack will lower ground clearance.

2. For full warranty terms and conditions, visit subaru.com.au/accessories-information/warranty

protect your investment

Do more while protecting your WRX from the rough and tumble of daily life. From carpet mats to a rear bumper protector, each of the below accessories are tailored for a perfect fit.

ACCESSORY		Part Number	WRX	WRX Premium
Styling				
1	Side Sill Plate (Non-illuminated)	E101SVA000	•	•
2	Exhaust Surround	E7710VA700	•	•
Protection				
3	Carpet Mat Set	J501AVA201	•	•
4	Car Cover	M001SFJ000	•	•
5	Body Side Moulding (Painted)	J101SFJ000##	•	•
6	Rear Bumper Protector (Film Type)	E771SFJ600	•	•
7	Weather Shields	E3610FJ800	•	•
8	Bootlip and Bumper Protector	SAT6003	•	•
Cargo and Tow				
9	Roof Cross Bars	SAT3006	•	•
10	Cargo Tray	J501SFJ400	•	•

Denotes colour option of your choice.

 To view our complete range of accessories and pricing online visit subaru.com.au/wrx/accessories





do all the things you've planned

Get out amongst it and pack more into your weekends with premium quality accessories that let you effortlessly take all your gear with you.

ACCESSORY	Part Number	WRX	WRX Premium
Cargo – Thule Roof Attachments (Roof Cross Bars Required)			
11 Xtender 6 Pair Ski Holder	SA1156	•	•
12 Thule Universal Flat Top Ski Carrier (4 Pair)	SAT8023	•	•
13 Thule Universal Flat Top Ski Carrier (6 Pair)	SAT8024	•	•
14 Bicycle Holder (Upright)	SAT8018	•	•
15 Bicycle Holder – Black (Upright)	SAT8019	•	•
16 Bicycle Holder (Fork Mounted)	SA1042	•	•
17 Universal Locking Arm	SA1043	•	•
18 Water Craft Holder	SA1044	•	•
19 Surfboard Carrier	SA1139	•	•
20 Thule Glide & Set (Kayak Carrier)	SAT9018	•	•
21 Thule Paddleboard & Mal Carrier	SAT8016	•	•
22 Luggage Pod Touring 100 (Titan Aeroskin) Textured Finish (Small)	SAT5008	•	•
23 Luggage Pod Touring 100 (Black Glossy) Smooth Finish (Small)	SAT5008B	•	•
24 Luggage Pod Motion 200 (Silver)	SAT9014	•	•
25 Luggage Pod Motion 200 (Black)	SAT9015	•	•

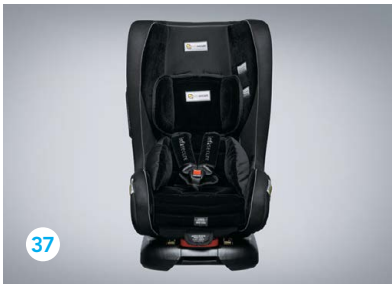
do™

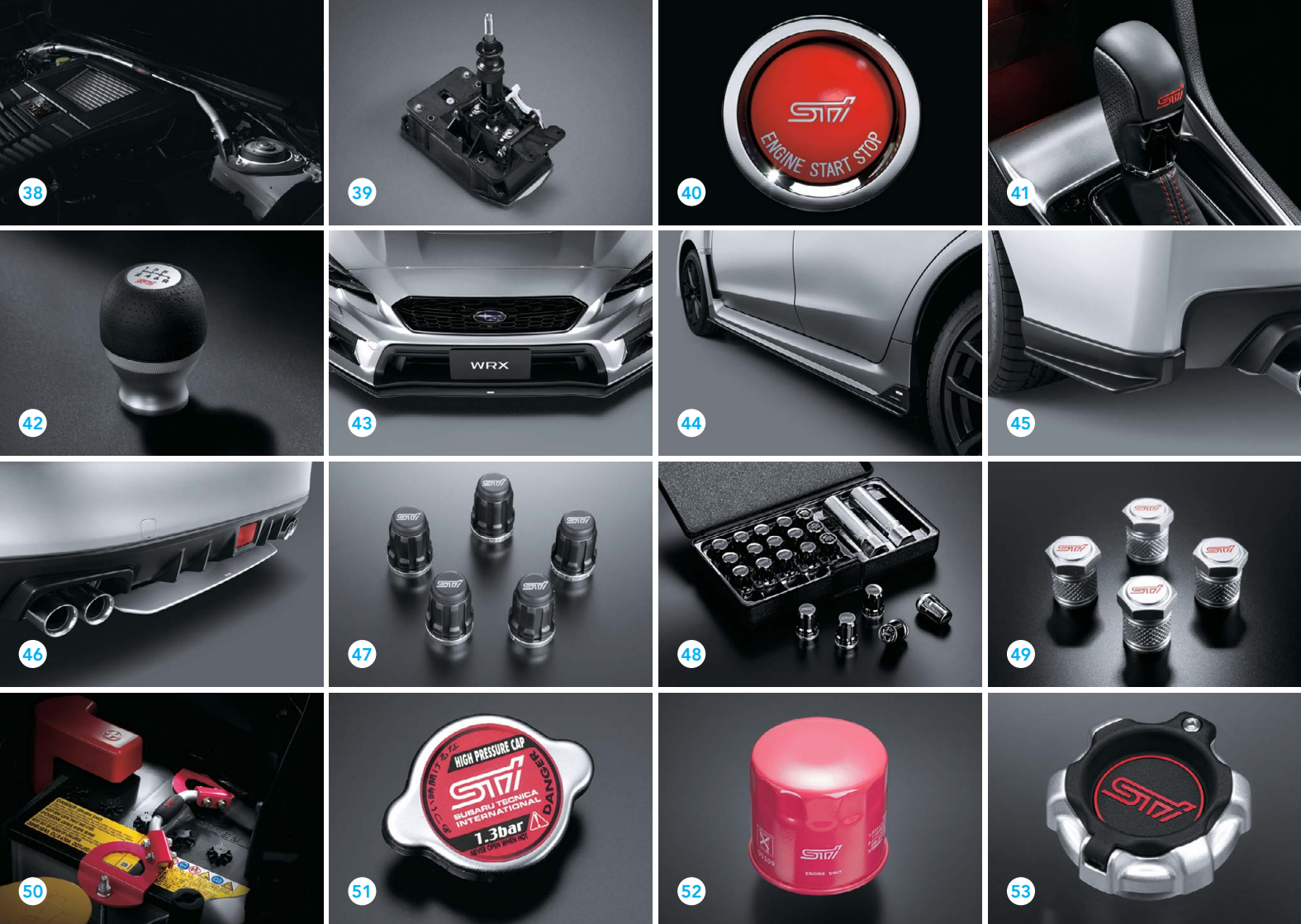
To view our complete range of accessories and pricing online visit subaru.com.au/wrx/accessories

ACCESSORY		Part Number	WRX	WRX Premium
Cargo – Thule Roof Attachments (Roof Cross Bars Required)				
26	Thule Go Box	SAT8005	•	•
27	Thule Go Pack Set (4 Bags)	SAT8006	•	•
28	Side Up Wheel Step	SAT9004	•	•
Security				
29	Wheel Lock Nuts	B327EYA000	•	•
30	Security Alarm System	H771AVA200	•	•
Convenience and Safety				
31	Round Type Ashtray (Black)	92172AG040	•	•
32	Cigarette Lighter	H6710FJ000	•	•
33	Ash Tray Holder	F6010AG010	•	•
34	Arm Rest Extension	J2010AG000JD	•	•
35	First Aid Kit	PR7670	•	•
36	Safety Triangle	SAT9007	•	•
37	Baby Seat - Kompressor Beyond Midnight	SAC7004	•	•



To view our complete range of accessories and pricing online visit
subaru.com.au/wrx/accessories





kick it into overdrive

Up the ante on your Subaru WRX by enhancing its street appeal, cockpit aesthetics and driver dynamics with STI branded performance parts.

ACCESSORY		Part Number	WRX	WRX Premium
STI Performance Parts				
38	Flexible Tower Bar	ST20502VV000	•	•
39	Short Throw Shifter	C1010VA010	•	•
40	Push-Start Engine Switch (Red)	ST83031ST012	•	•
41	STI Leather Shift Knob (CVT)	C1010SG101	•	•
42	STI Leather Shift Knob (6MT)	C1010FG100	•	•
43	STI Front Under Spoiler¹	E2410VA030	•	•
44	STI Side Under Spoiler¹	E2610VA000	•	•
45	STI Rear Side Under Spoiler¹	E5610VA000	•	•
46	STI Rear Under Spoiler¹	E5610VA120	•	•
47	Wheel Lock Nut Set (Black)	ST28170ST020	•	•
48	Security Wheel Nut Set	ST28170ST060	•	•
49	Valve Cap Set	ST28102ST030	•	•
50	Battery Clamp/Holder	ST82182ST000	•	•
51	High Pressure Radiator Cap	ST4511355010	•	•
52	Sports Oil Filter	ST15208ST000	•	•
53	Oil Cap	ST15257ZR010	•	•

1. Will reduce ground clearance.

To view our complete range of accessories and pricing online visit subaru.com.au/wrx/accessories

welcome to the family

There are cars that simply get you from A to B, and then there are cars that empower you. Buying a Subaru is like embracing life with both hands and knowing that nothing is going to stop you. When you buy a new Subaru you are welcomed into an owner's program that gives you access to a number of benefits.



Subaru New Car Warranty – 3 Year/Unlimited Kilometres

Every new Subaru is covered by a three year unlimited kilometre manufacturer's national warranty. You can protect your investment further by purchasing an additional Subaru Assured Warranty¹ of up to three years. Visit [subaru.com.au/warranty](https://www.subaru.com.au/warranty) or ask your Subaru Retailer for more information.

Subaru Capped Price Servicing

With our Subaru 3 Year/75,000 Kilometre Capped Price Servicing Program², you'll now know the maximum amount you will have to

pay for your next scheduled service during the Program period. You'll also have peace of mind knowing that specialist Subaru technicians will be looking after your pride and joy using only Genuine Subaru Parts.



DataDotDNA®

Every Subaru is fitted with advanced engine immobilisers and the DataDotDNA^{®3} Theft Deterrent System. Microscopic dots are laser-etched with each vehicle's unique Vehicle Identification Number – making it a less attractive target for thieves.

Three Year Rebate on Theft Insurance Excess

DataDot Technology (Australia) Pty Ltd will pay your theft insurance excess⁴ (up to a maximum of \$800 including GST) should your new Subaru be stolen and not recovered within 45 days despite the presence of DataDotDNA^{®3} and warning labels.

1-Month Health Check and Chat

The 1-Month Health Check and Chat is a free consultation within the first month after delivery of your new Subaru. It allows our factory-trained technicians to provide quick vehicle checks, and one of our Service Advisors will answer any of your questions to help ensure an ongoing, worry-free experience.

Subaru's Map Updates

If your new Subaru is fitted with a factory line fit navigation unit your unit will be covered by Subaru's Map Update Program⁵ – guaranteeing you'll have access to the latest maps with our Latest Map Guarantee and our 3 Year Map Update Program (subject to the vehicle having its scheduled services performed through a participating authorised Subaru Service Centre).

My Subaru – online owner's destination

The My Subaru owner's portal is an online destination for owners which provides access

to exclusive benefits, tailored content, your vehicle's ownership history and much more. Login to My Subaru, the online destination for Subaru owners that will help you get more out of your vehicle, and more out of your life. Visit [my.subaru.com.au](https://www.subaru.com.au)

Subaru Roadside Assistance

Enjoy 12 months of Australia-wide, standard Roadside Assistance when you purchase your new Subaru. In the unfortunate situation where you need that extra helping hand, our Roadside Assistance will help¹ with arranging a tow, battery service, flat tyre service, fuel delivery and lockout service.

Subaru Certified Collision Repairer Network

With a dedicated Certified Collision Repairer² helpline available on 1800 737 179, help is available when you need it most. Available 24-hours a day, 7 days a week, help is only a phone call away. Subaru Certified Collision Repairers guarantee that trained specialists will repair your Subaru to strict factory specifications using Genuine Subaru Parts.

live life without limits

Genuine Accessories

Genuine Subaru Accessories are designed to enhance your vehicle, are factory approved by Subaru and are protected by the Genuine Subaru Accessories Warranty. For our full range of Subaru WRX accessories visit [subaru.com.au/wrx/accessories](https://www.subaru.com.au/wrx/accessories). For warranty information visit [subaru.com.au/warranty](https://www.subaru.com.au/warranty) and click on "Genuine Subaru Accessories Warranty".

Subaru Finance

Subaru Finance³ provides a range of competitive financial solutions to approved customers. Our finance specialists will help you find a finance package to meet your needs conveniently.

Subaru Insurance

It's important to enjoy the freedom of owning a Subaru, but it's also important to protect it. A range of Subaru Insurance⁴ options provides a variety of choices, including: Subaru Comprehensive Motor Vehicle Insurance,

Subaru Value Protect Insurance and Subaru Loan Protection Insurance.

Subaru Certified Used Cars

Every Subaru Certified Used Car has passed a 120-point quality inspection and comes with a one year unlimited kilometre Subaru Assured Warranty⁵ – to complement the balance of a new vehicle warranty or the statutory warranty that remains – from participating Subaru Certified Used Car Retailers.

Subaru Active

At Subaru we believe in living life to the fullest – from cycling and triathlons, to holidays and the arts. Through Subaru Active we promote the importance of a balanced lifestyle through a number of sponsorships and associations.

Get active at [subaru.com.au/active](https://www.subaru.com.au/active)

1. The Subaru Assured Warranty product is issued by the selling Subaru Retailer. Subaru Australia has no liability in respect of this warranty. 2. Every brand new 2018 Subaru WRX comes with Subaru's 3 Year/75,000 Kilometre Capped Price Servicing Program. Available at participating Subaru Retailers only and does not apply to rental and some other classes of vehicles. For full Capped Price Servicing Terms and Conditions visit [subaru.com.au/service/pricing/capped-price-servicing](https://www.subaru.com.au/service/pricing/capped-price-servicing). 3. DataDotDNA[®] is a theft deterrent not a theft prevention mechanism. 4. Vehicles must be registered, comprehensively insured and less than 3 years old. DTA must receive a claim within 45 days of the theft. Terms and conditions apply. 5. Subaru's Map Update Program is available on MY18 Subaru WRX models purchased from July 24, 2017 onwards with the factory line fit Gen2.1 navigation unit. Subaru's Map Update Program is not available on accessory fit or dealer sourced navigation units. Subaru Australia reserves the right to add and remove eligible vehicles at its discretion. For full terms and conditions of the Subaru Map Update Program visit [subaru.com.au/owner-experience/benefits/subaru-map-update-program](https://www.subaru.com.au/owner-experience/benefits/subaru-map-update-program).

1. Terms and conditions apply. For a full list of benefits, visit <https://www.subaru.com.au/owner-experience/benefits/program/roadside>. 2. Subaru Certified Collision Repairer network not available in all areas. Call 1800 737 179 or visit [subaru.com.au/retailers](https://www.subaru.com.au/retailers) to find your closest Subaru Certified Collision Repairer. 3. Finance provided by Macquarie Leasing Pty Limited ABN 38 002 674 982 Australian Credit Licence Number 394925 trading as Subaru Finance. All applications for credit are subject to Macquarie's normal credit approval criteria. Terms and conditions, fees and charges apply. 4. Subaru Insurance products are issued by Allianz Australia Insurance Limited AFS Licence No. 234 708 ABN 15 000 122 850 (Allianz). In arranging this insurance Subaru (Aust) Pty Limited ABN 95 000 312 792 (Subaru) and the authorised dealers act as agents of Allianz and not as your agent. Neither Subaru nor any of its related companies or appointed authorised retailers have any liability in respect of these policies. 5. The Subaru Assured Warranty product is issued by the selling Subaru Retailer. Subaru Australia has no liability in respect of this warranty.

Subaru WRX Awards

2014 - Australasian New Car Assessment Program 5 star ANCAP safety rating
2011 - Australasian New Car Assessment Program 5 star ANCAP safety rating for the entire Impreza range
2009 - MOTOR Magazine, Bang For Your Bucks Winner, Subaru Impreza WRX
2008 - International Engine of the Year Award, 2.0 – 2.5-litre class, Subaru Impreza WRX (2.5-litre turbocharged horizontally-opposed Boxer engine)
2007 - Australasian New Car Assessment Program 5 star ANCAP safety rating for the entire Impreza range
2006 - International Engine of the Year Award, 2.0 – 2.5-litre class, Subaru Impreza WRX (2.5-litre turbocharged horizontally-opposed Boxer engine)
2005 - International Association of Autotheft Investigators (IAATI), Outstanding Achievement in the Reduction of Motor Vehicle Theft in Australia, Subaru Impreza WRX
2004 - Australia's Best Cars, Best Sports Car 2004 under \$57,000, Subaru Impreza WRX
2003 - Australia's Best Cars, Best Sports Car 2003 under \$57,000, Subaru Impreza WRX
2001 - Australia's Best Cars, Best Sports Car under \$56,000, Subaru Impreza WRX
2000 - Wheels Car of the Year, Subaru Impreza
- QLD Car of the Year Awards, Outstanding Compact Car, Subaru Impreza
- Car of the Decade, Car Magazine UK, Subaru Impreza WRX
- Gold Medal in Sports/Performance Car Category, Which Car, Australia, Subaru Impreza WRX
1999 - Best Sports Car under \$56,000, NRMA/RACV, NSW & VIC, Subaru Impreza WRX

Subaru Australia reserves the right to vary vehicle specifications and standard features in Australia from those detailed in this brochure. Vehicles shown in this brochure may be fitted with accessories available at additional cost. No part of the brochure can be reproduced without written permission from Subaru Australia. Printed in Australia.

subaru.com.au

© Copyright 2017 – Subaru (Aust) Pty Limited. All rights reserved.
Subaru (Aust) Pty Limited ABN 95 000 312 792 (Subaru Australia) PO Box 8311, Baulkham Hills NSW 2153 Toll Free: 1800 226 643

